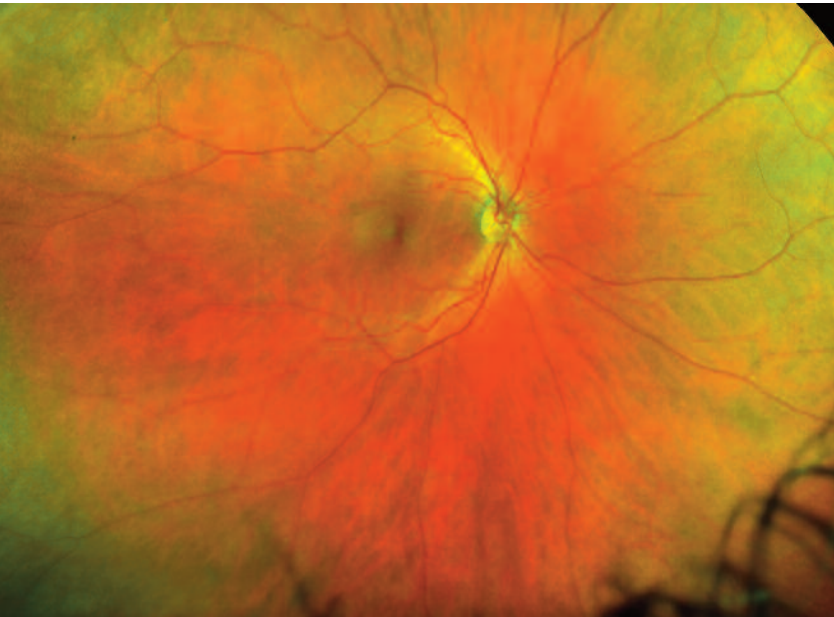
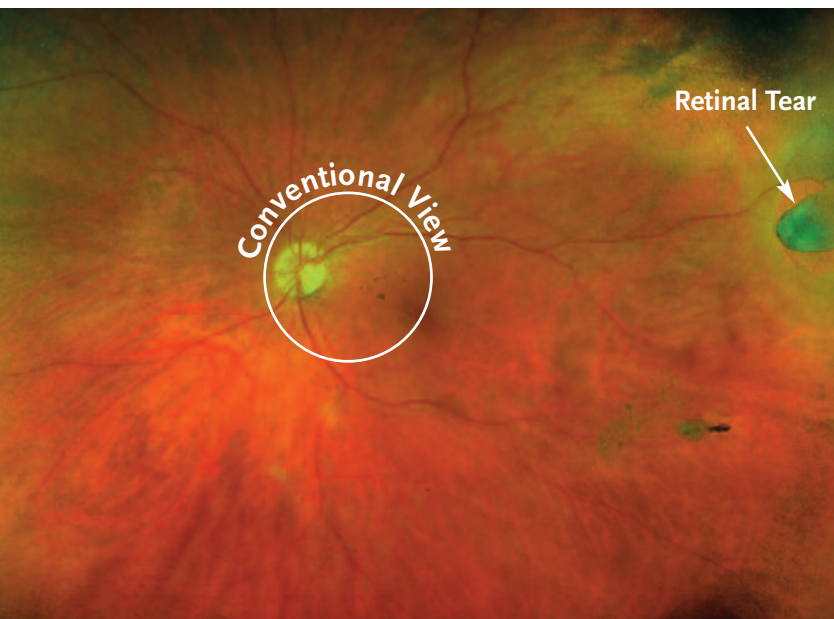


Helping you maintain healthy eyes

# There's More To A Child's Eye Examination Than Checking for 20:20 Vision



An **optomap** image of a healthy retina



An **optomap** image of undetected retinal tears

Many vision problems begin at an early age, so it is important for children to receive proper eye care. In addition to looking for changes in the front of your child's eye, which could affect overall vision, we also need to look at the retina (the back of the eye), to check that it is healthy and doesn't show signs of damage or disease. Many conditions, such as retinal detachments and retinal holes can be treated successfully if caught early.

Your doctor offers **optomap** to patients of all ages because an exam of the retina is an integral part of a comprehensive eye exam, regardless of how well you see. A majority of eye problems arise without a patient's knowledge and an **optomap** allows your doctor to get an ultra-widefield view of your child's retina in a fast and comfortable way. Your doctor recommends an **optomap** as an integral part of your child's eye exam today. The **optomap** provides your doctor with an overview of approximately 82% of your child's retina in a single capture, giving your doctor a more detailed view than can be achieved by other means.

The **optomap** was developed by Douglas Anderson whose son lost sight in one eye at the age of five due to an undetected retinal detachment. Mr. Anderson set out to develop a system that could capture an unprecedented view of the retina (200°) and was patient-friendly, particularly for children, who tend to be more difficult to examine.

PLEASE NOTE: Your doctor strongly believes an **optomap** is an essential part of your child's comprehensive eye exam. However, some health plans do not cover **optomap**, which means that you may be responsible for an additional fee.

Optos, Inc.  
67 Forest Street  
Marlborough, MA 01752  
USA  
800-854-3039  
**optomap.com**

  
**optomap**<sup>®</sup>  
ultra-widefield retinal imaging

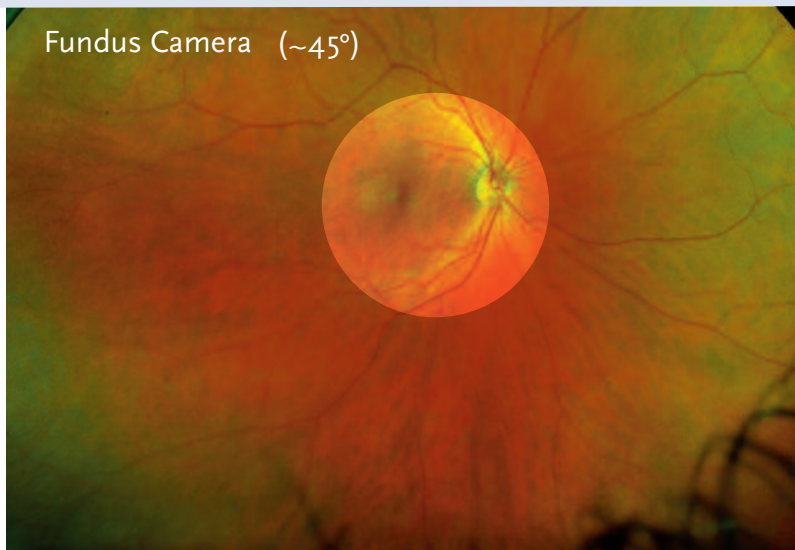
# Comparison of Fields of View

An **optomap** retinal image compared to conventional devices in a single capture.

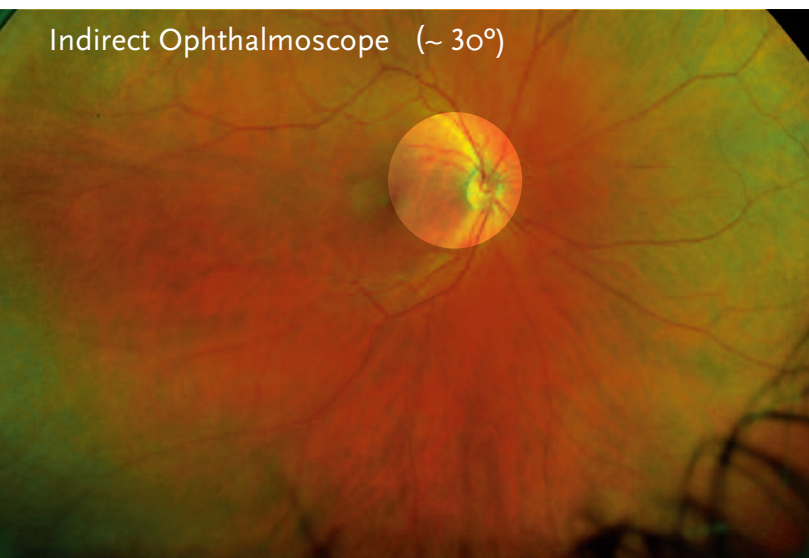
optomap Ultra-widefield Retinal image (200°)



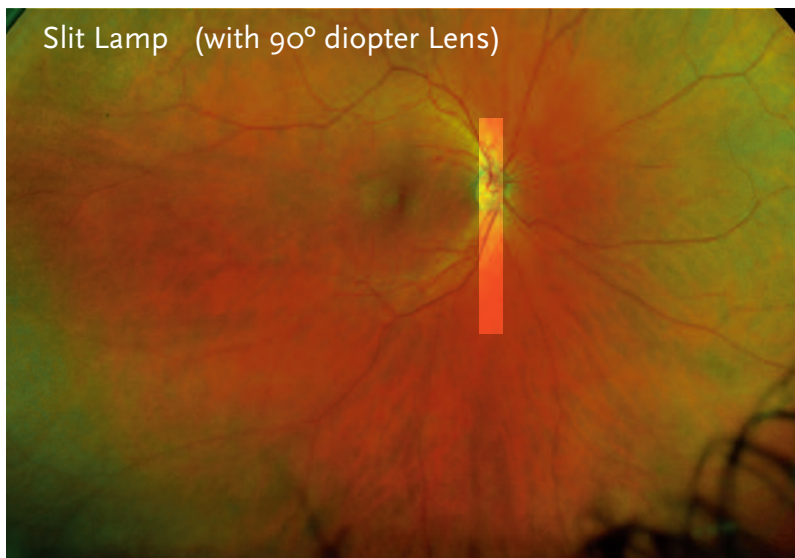
Fundus Camera (~45°)



Indirect Ophthalmoscope (~30°)



Slit Lamp (with 90° diopter Lens)



Widefield (100°)



ETDRS Standard

